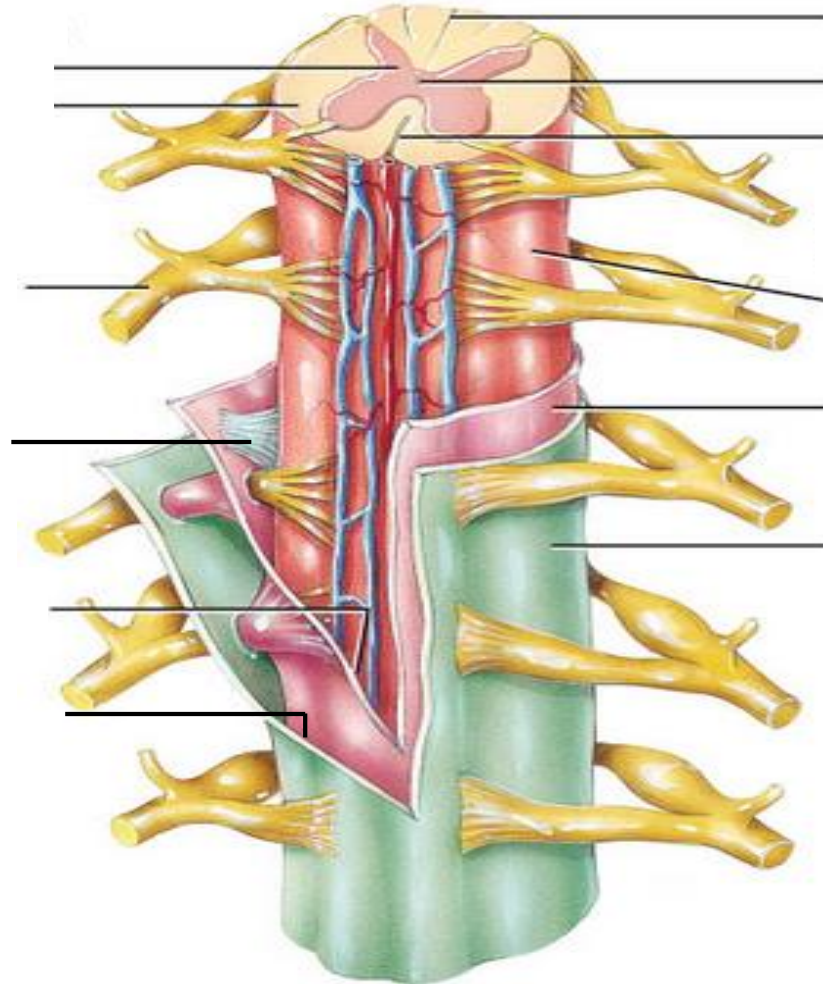


SPINAL CORD

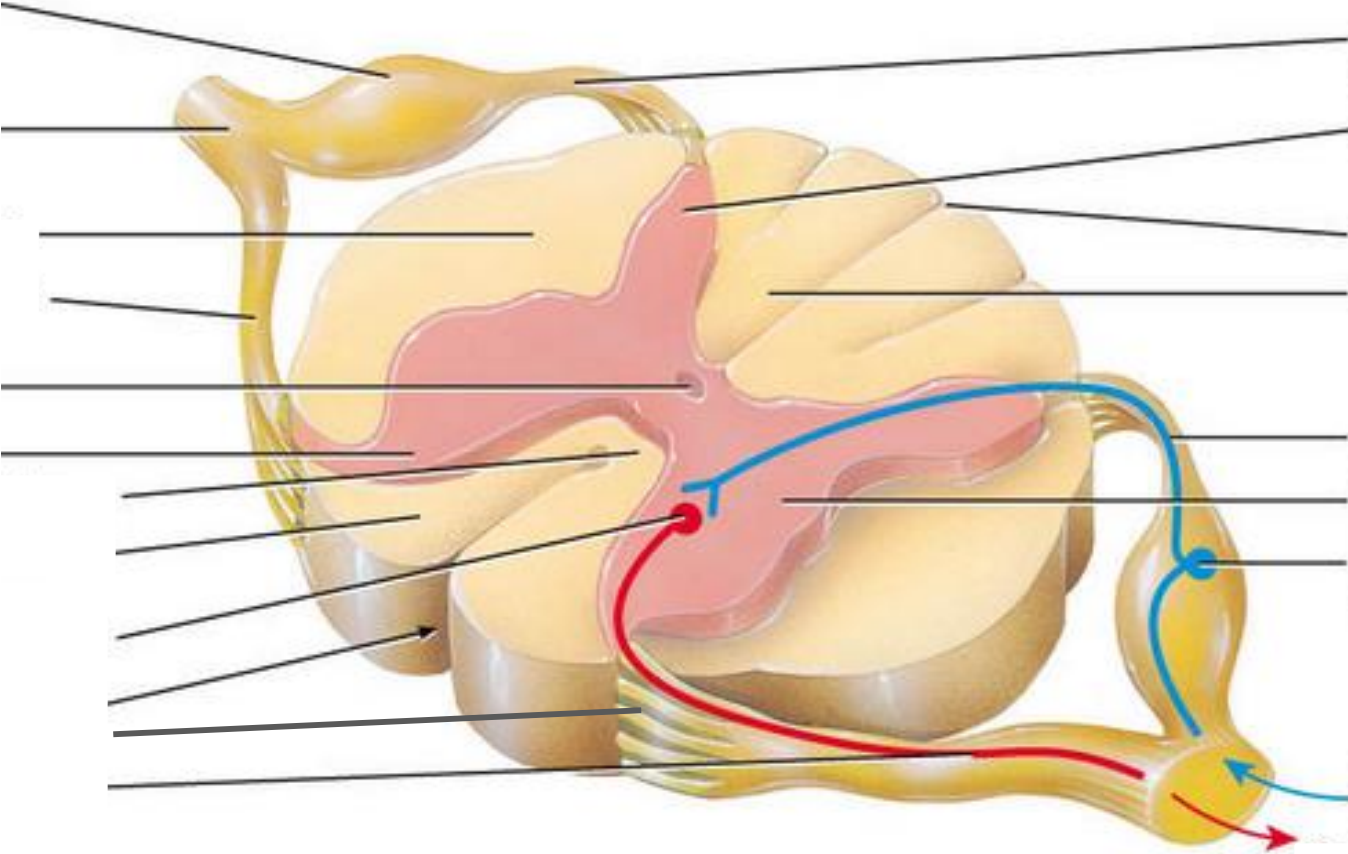
LABEL & LIST FUNCTIONS:



REFER TO FIG. 13.1 P. 494

SPINAL CORD

LABEL & LIST FUNCTIONS:

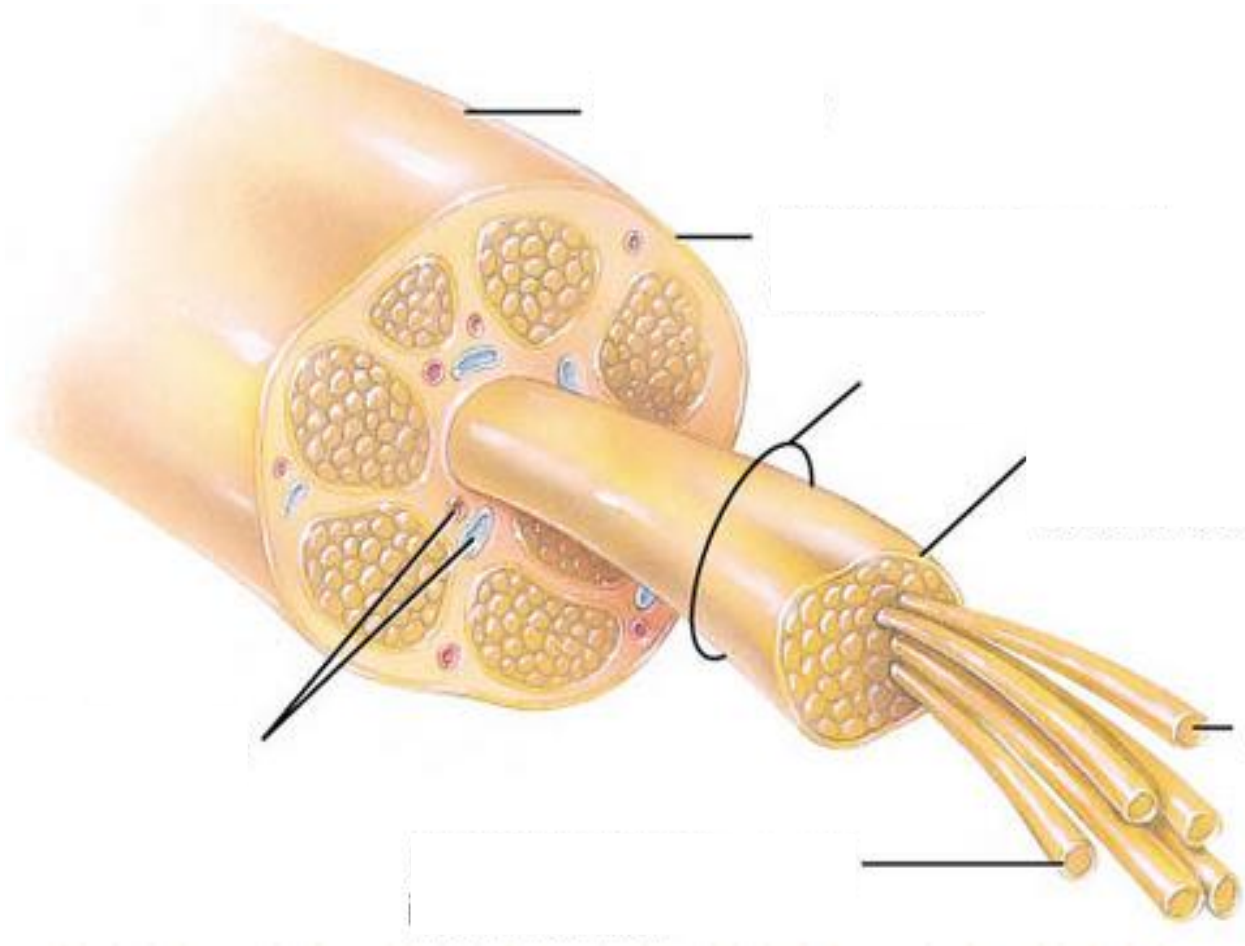


Transverse section of thoracic spinal cord

REFER TO FIG. 13.3 P. 497

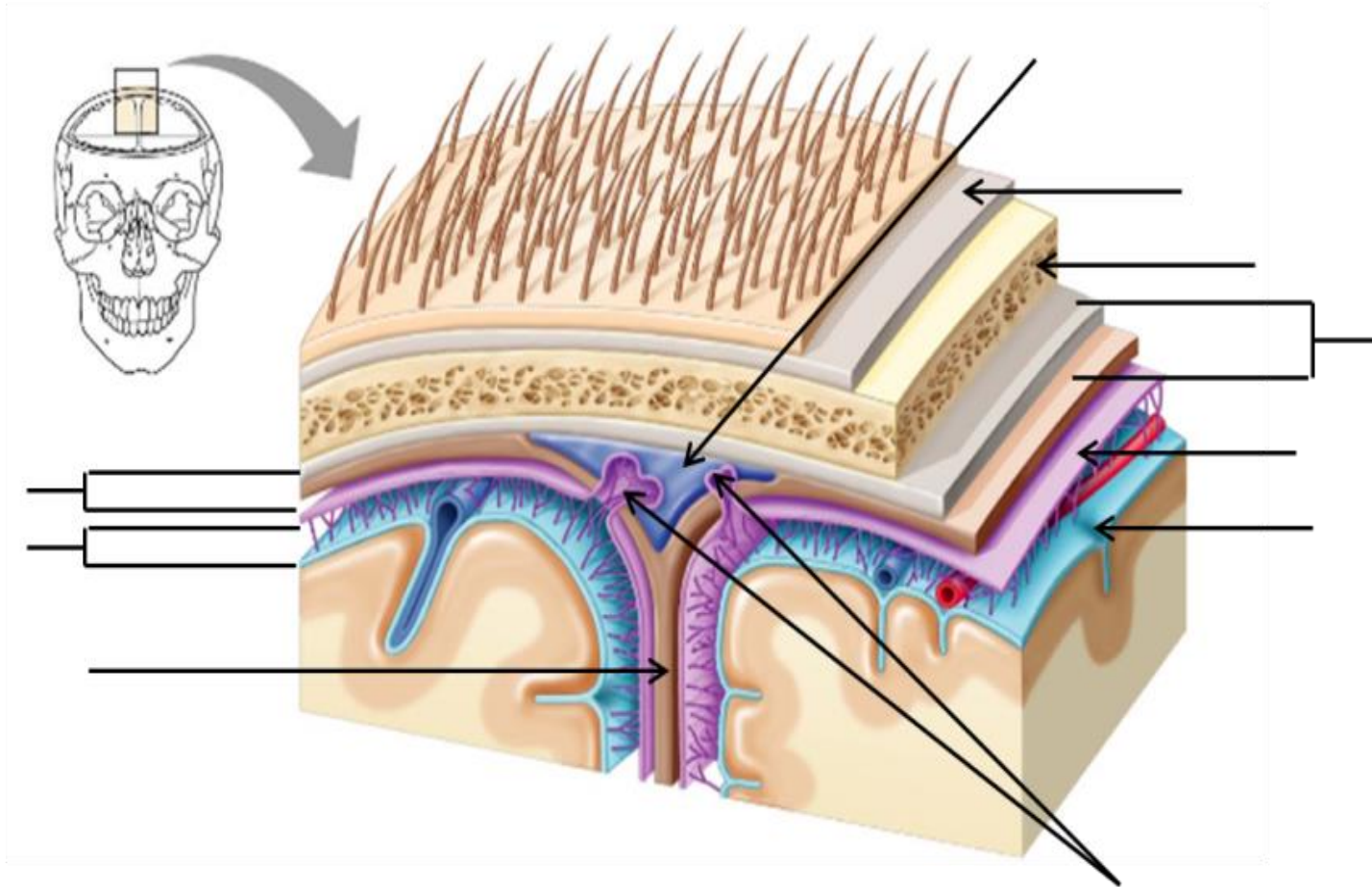
SPINAL NERVE (NEURON)

LABEL & LIST FUNCTIONS:



REFER TO FIG. 13.5 P. 501

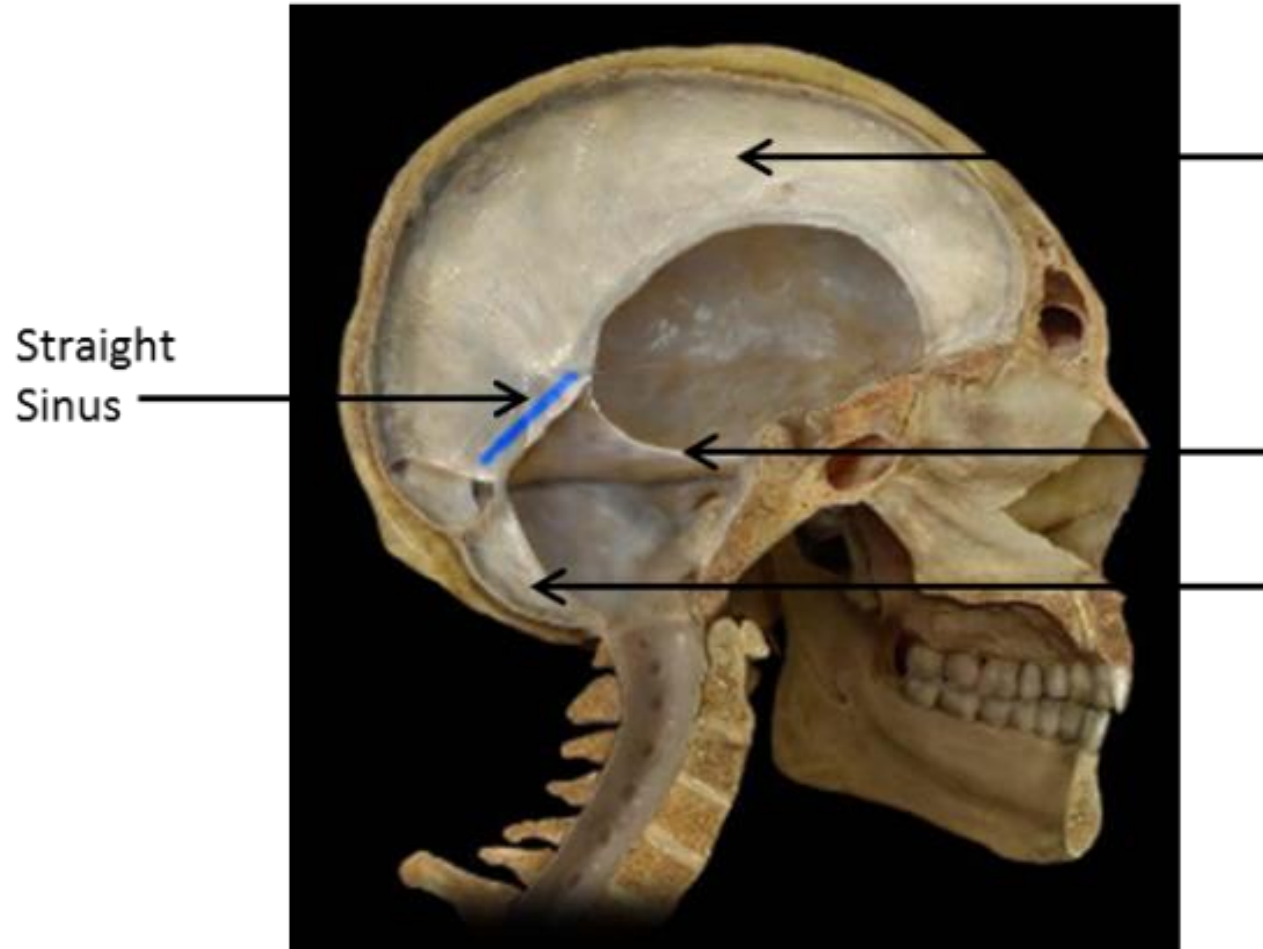
Label the following & list function/characteristics.



REFER TO FIG. 14.2 P. 530

DR. K. WELCH

Label the extensions of dura mater.

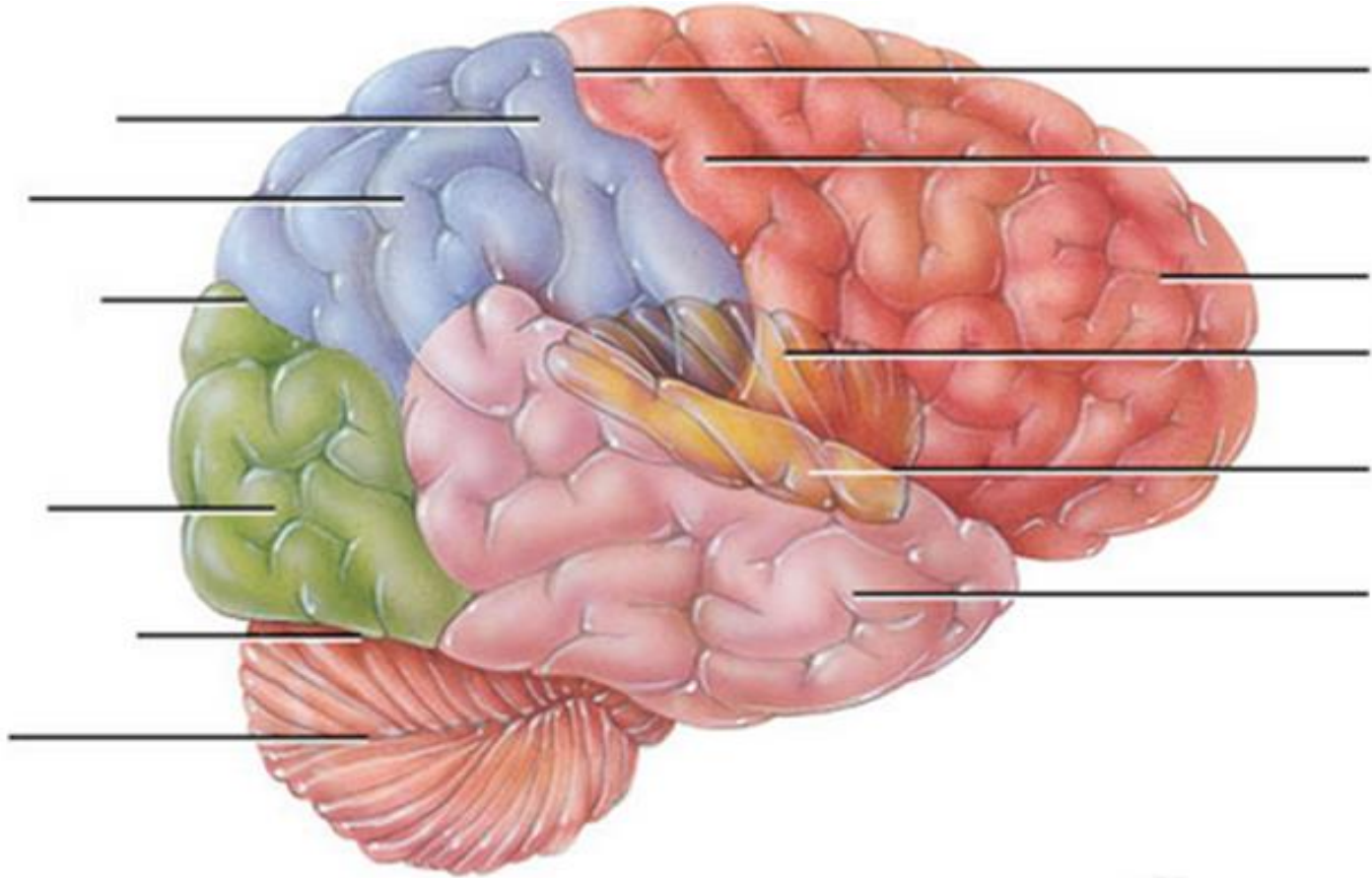


REFER TO FIG. 14.2 P. 530

DR. K. WELCH

BRAIN

LABEL & LIST FUNCTIONS:

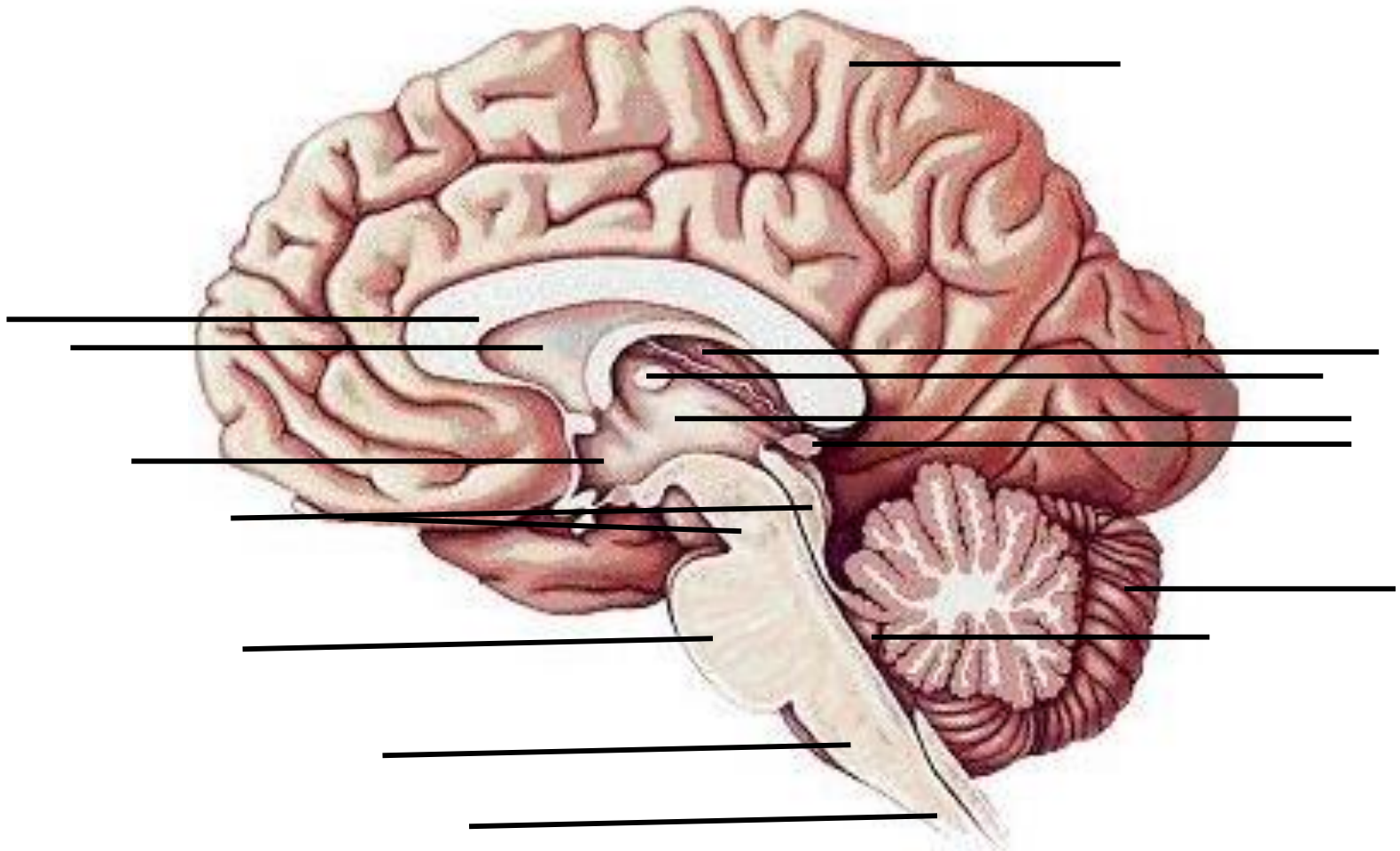


REFER TO FIG. 14.11 P. 547

DR. K. WELCH

BRAIN

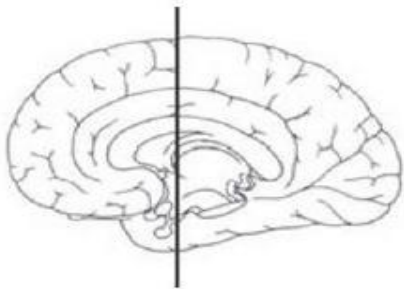
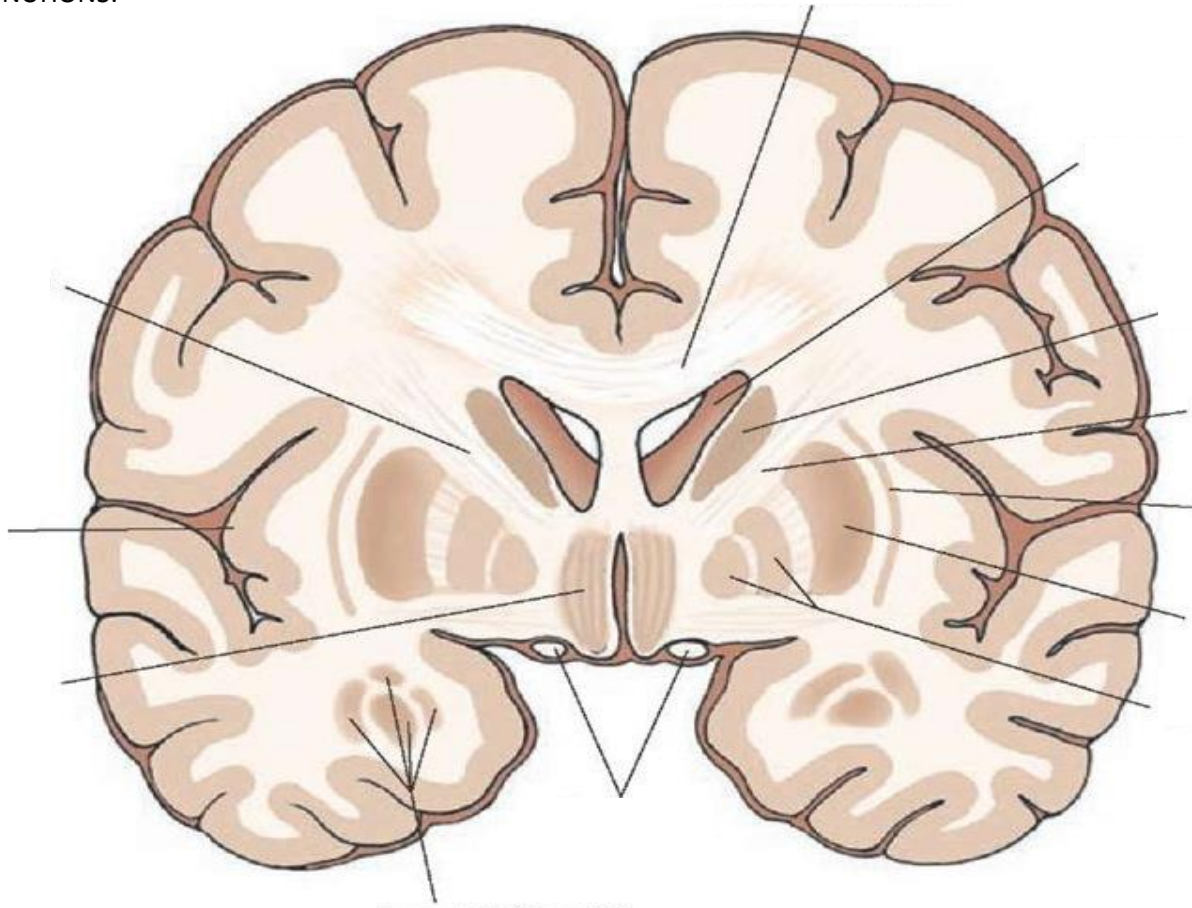
LABEL & LIST FUNCTIONS:



REFER TO FIG. 14.1 P. 529; 14.4 P. 534

BRAIN

LABEL & LIST FUNCTIONS:

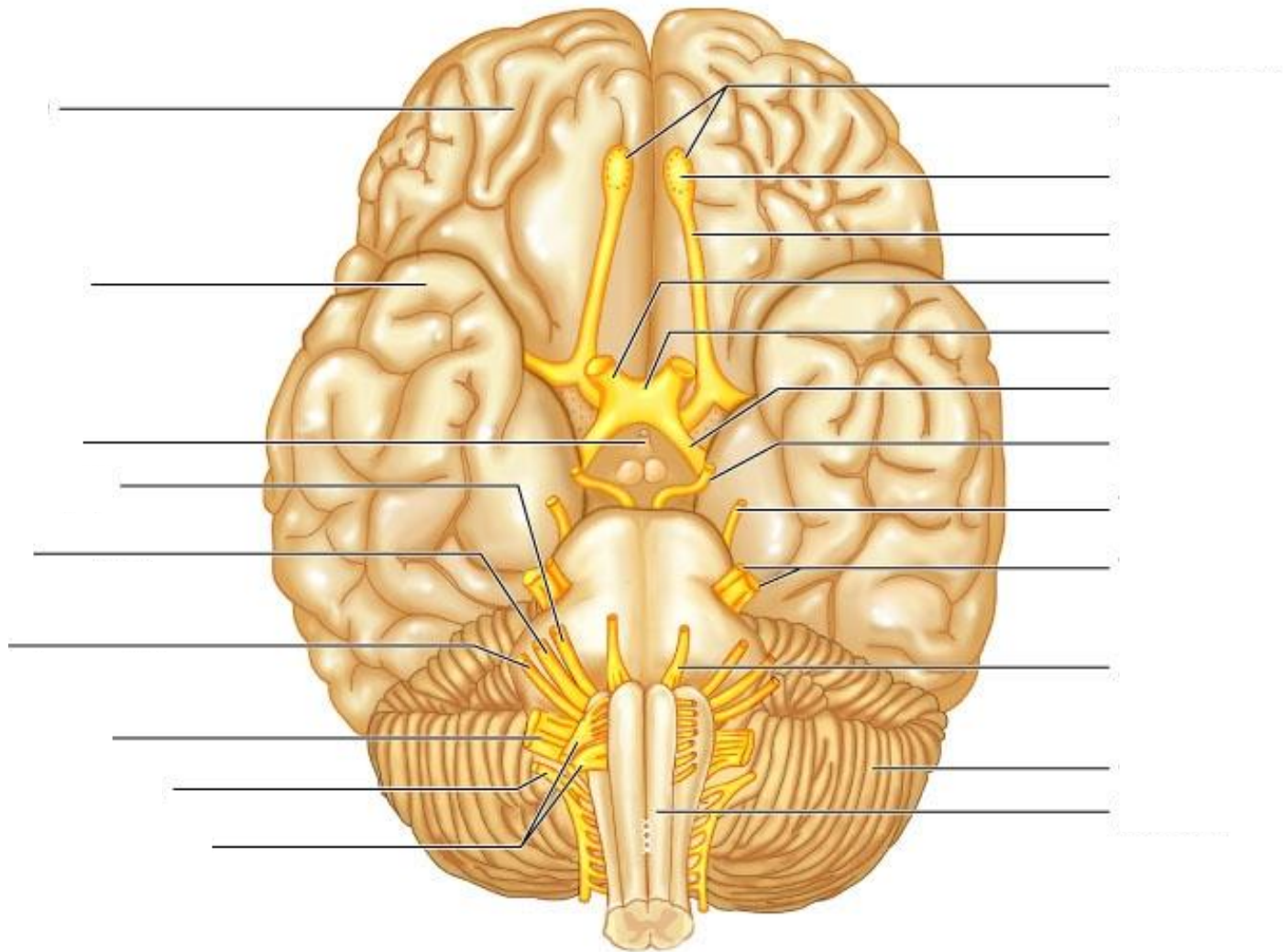


REFER TO FIG. 14.13 P. 550

DR. K. WELCH

BRAIN

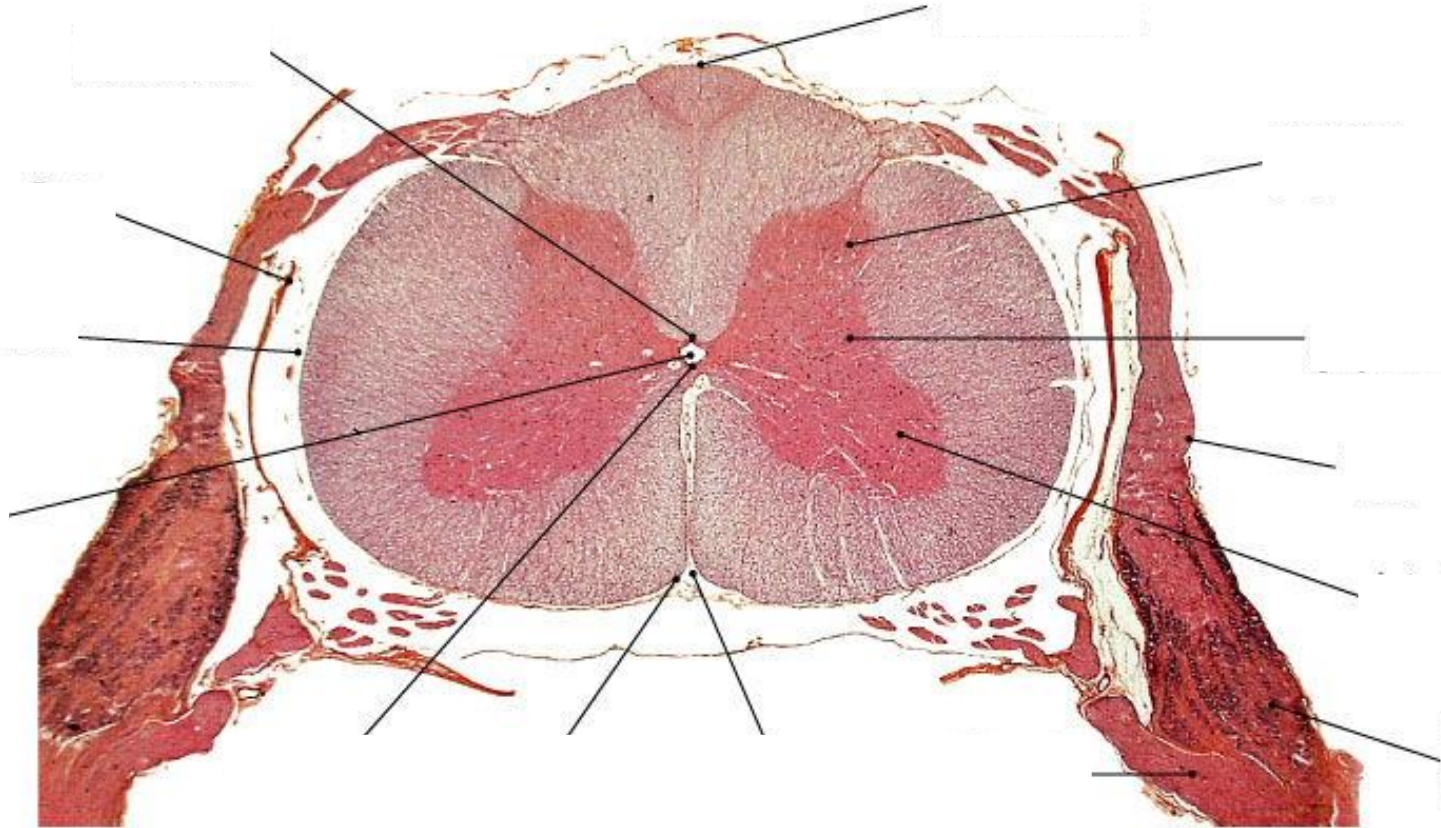
LABEL CRANIAL NERVES & LIST FUNCTIONS:



REFER TO FIG. 14.5 P. 536

DR. K. WELCH

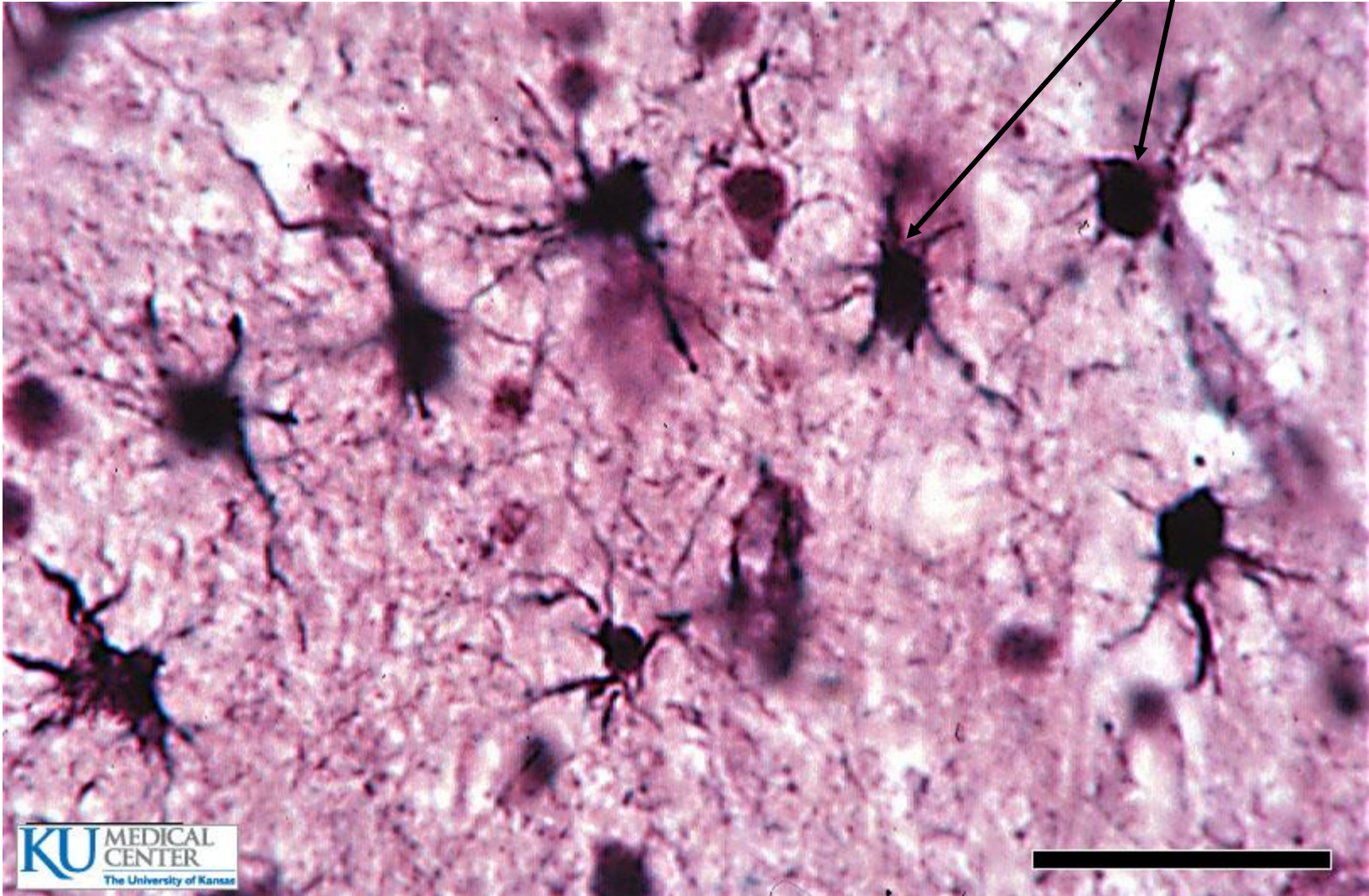
SPINAL CORD



NEURON



ASTROCYTES – SLIDE (NERVOUS #15)



CENTRAL CANAL SPINAL CORD – SLIDE (NERVOUS #2)

