



# Case-Management Fall 2017



**CONNIE FUENTES**  
**HCC-ONLINE ADVISOR**  
**GROUP PRESENTATION**

**ADVISING SESSION 1**

# Student & Advisor Responsibilities



## Student

Students will:

- Schedule regular advising appointments and come prepared with questions.
- Be an active learner by participating fully in the advising experience.
- Ask questions for better understanding.

## Advisor

Advisors will:

- Assist students with academic planning, goal setting, curriculum, and interpretation of policies and procedures.
- Work with new students who are enrolled in a Student Success course.

# First Advising Session / Second Advising Session

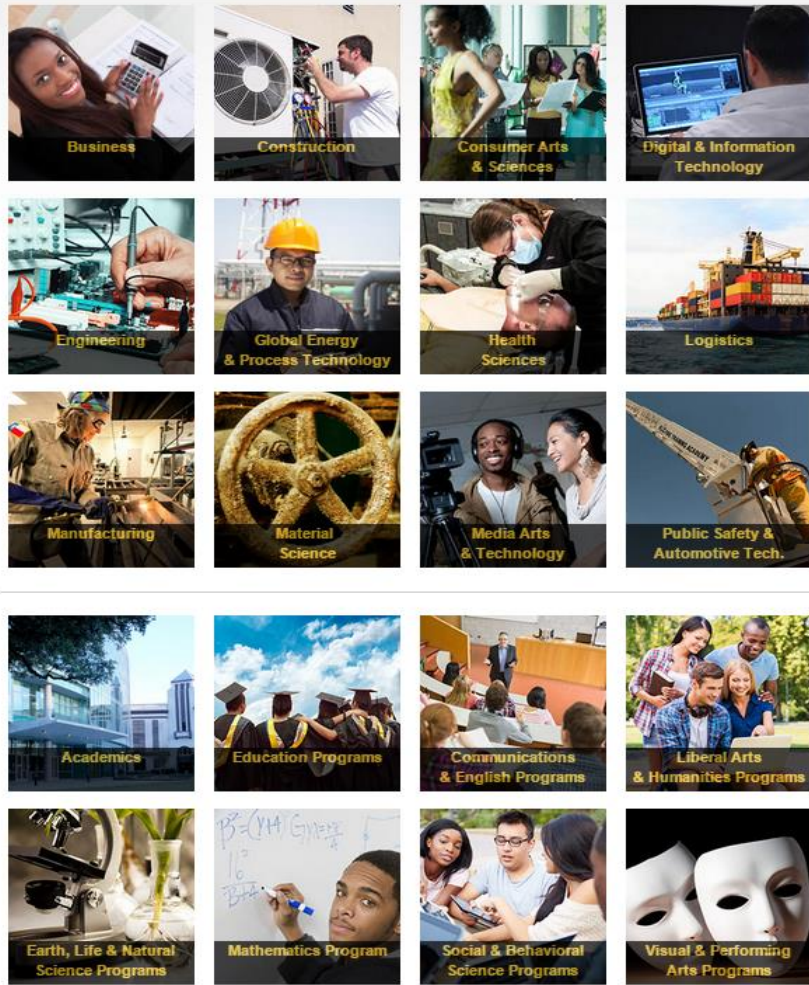
## First Advising Session will Cover:

- Degree Plan Options
- iAAR and Academic Planner
- “Learning Web” and Syllabus
- Advising To-Do list

## Second Advising Session will Cover:

- Academic Planner
- Academic Progress
- Registration for the next term
- Resources and campus referrals as needed

# Career Clusters & Majors



**Academic Transfer Education**

**Associate in Arts (AA)**

**Associate in Science (AS)**

**Or**

**Workforce Education**

**Associate of Applied Science**

**Level 1 & Level 2 Certificates**

# Academic Transfer Education

## Associate of Art or Science

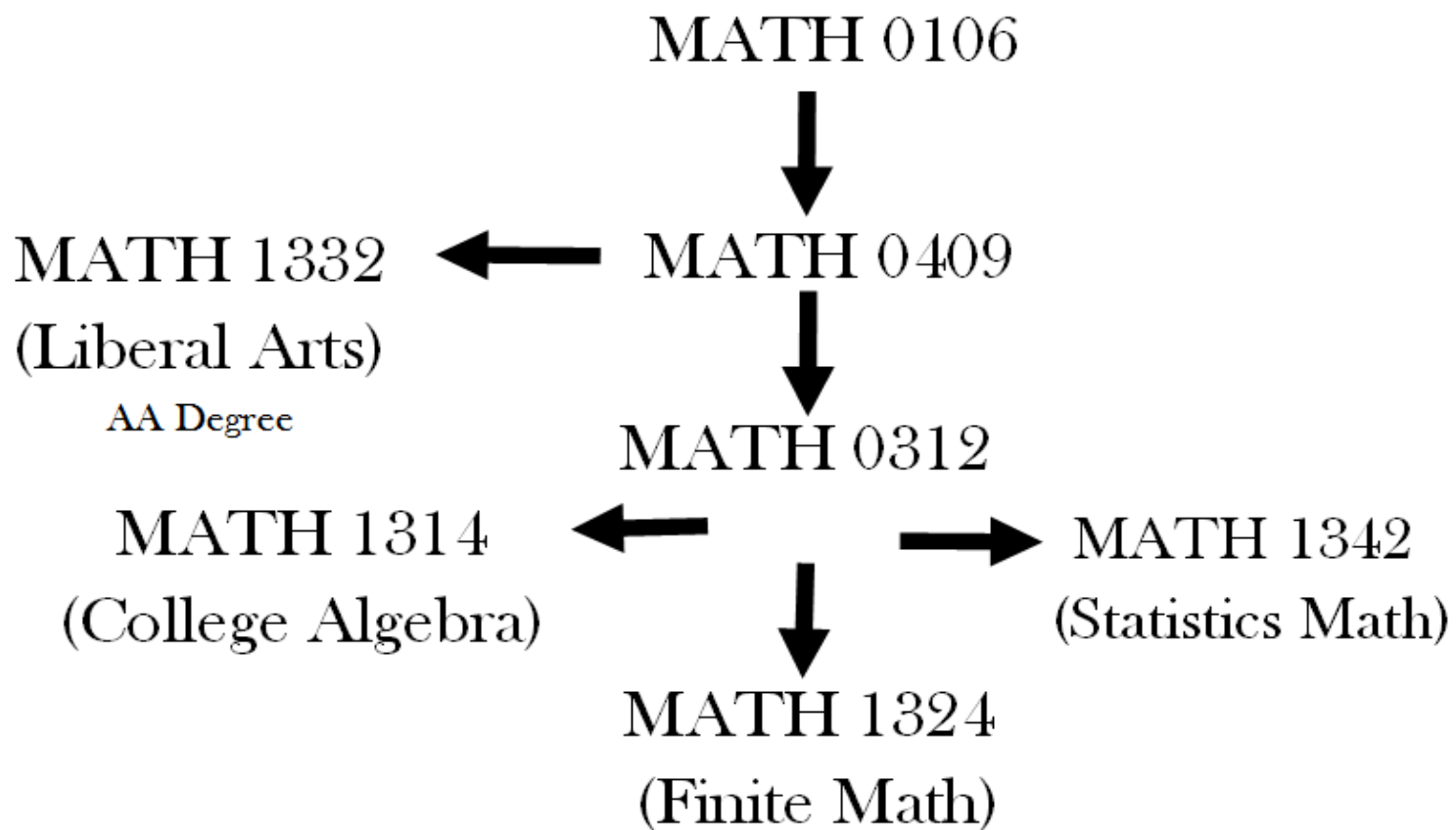


- **Key Questions to Consider:**

- Is your primary goal to obtain a bachelor's degree at a university?
- Do you plan on taking the "basics/core courses" at a community college so you can transfer to a university as fast as possible?
- Are you already at a university and wish to take courses at a community college to transfer back to that university?

- **About Academic Transfer Education:**

- In Academic Transfer Education at the community college level, you will take general education core curriculum courses and prerequisites.
- Upper division and major courses for your bachelor's degree will be taken once you transfer to a university.
- The goal is to get an associates degree at the community college level in two years, and then earn your bachelors at a university after two years.



- > MATH 1332: Humanities, English Literature, Language, Music & Art
- > MATH 1342: Health Occupa, Soc. Scn, Behavl Scn. Soc.Work, Criml Justice, Hist,
- > MATH 1324: Business & Computer Science
- > MATH 1314: STEM, Natural Science, Computer Science, Engineering & Education

# Academic Transfer Education



## Common Core (Basics):

Communication ( ENGL).....	6 Hours
Component Area ( EDUC 1300).....	6 Hours
Language, Phil & Culture.....	3 Hours
History.....	6 Hours
Government.....	6 Hours
Mathematics .....	3 Hours
Life & Physical Sciences.....	6 Hours
Creative Arts.....	3 Hours
Social & Behavior Science.....	3 Hours

**Total:** (Core Complete)..... **42 Hours**

## Transfer Plans

<http://www.tccns.org/>

### Associate of Art (AA)

42 Hours Basic Core

+ 18 Hours Electives = 60

### Associate of Science (AS)

42 Hours Core + 10 Hours of Math  
& Science + 8 Hours Electives = 60

# Workforce Education



- **Key Questions to Consider:**

- Is your primary goal to obtain the skills needed to get a job as fast as possible?
- Do you want short-term, up-to-date, and relevant education using workplace curriculum?
- Do you want to update your work skills or advance your career?
- Do you want to rapidly change careers?
- Do you want to obtain a job quickly, but later down the line transfer to a university?

- **About Workforce Education:**

- Workforce Education means that you will be taking mostly technical job-focused courses and a few general education courses for the completion of your certificate or Associate of Applied Science (AAS) degree at the community college level.
- Some Workforce credits/programs will transfer to a university, however, some of your courses/programs may not transfer. You will need to speak with an Advisor at your prospective university to ask whether or not your courses/program will transfer.

- **Degree Options in the Workforce Track:**

- Associate of Applied Science (AAS), Level 1 & Level 2 Certificate



# Areas of Study

Science, Technology, Engineering & Math	Public Safety, Transportation & Consumer Services	Liberal Arts, Humanities & Education	Health Sciences
Agriculture	Autobody Technology	Child Development	AAS Allied Health
Astronomy	Automotive Technology	Communication	Dental Assistant
Biology	Cosmetology	Dance	Dental Hygiene
Chemistry	Criminal Justice/Law Enforcement	Drama	Diagnostic Medical Sonography
Computer Networking & Telecommunications	Culinary Arts	English	Health Information Technology
Computer Programming	Emergency Medical Services	History	Healthcare Career Academy
Drafting & Design	Fire Protection Services	Humanities/Interdisciplinary Studies	Histology Technician
Engineering Technology	Fire Science & Safety	Library Science	Human Services Technology
Electronics Engineering Tech.	Heavy Vehicle & Truck Repair	Music	Medical Assistant/Medical Scribe
Engineering	Hospitality Management	Philosophy	
Geographic Information Science	Travel & Tourism	Physical Education	
Geology		Sign Language/Interpretation	
Horticulture		Speech	
Instrumentation & Controls Tech.		Studio Art & Art History	
Mathematics		Teacher Education	
Petroleum Engineering Tech.		World Languages	
Physics			
Process Technology			
Construction Industry & Manufacturing	Business	Art & Design	Social & Behavioral Sciences
Constructional Engineering Techn	Accounting	Audio Recording Technology/Video Pr	Anthropology
Corrosion Technology	Business Management	Digital Communication	Economics
Heating, Air Conditioning & Refrig	Business Technology	Digital Gaming & Simulation	Geography
Industrial Electricity	Finance/Banking	Fashion Design	Government
Logistics & Global Supply Gain Management	International Business	Fashin Merchandising	Psychology
Machining Technology	Legal Assistant	Filmmaking	Sociology
Manufacturing Engineering Techn	Marketing	Interior/Kitchen Design	
Welding	Real Estate	Music Business	

# Career Exploration



## In EDUC 1300 you will:

- Develop an educational and career plan based on individual assessments and exploration

- Use this information to help you identify a career path and program of study that works for you
- Consider your options and talk it over with your Advisor
- Use **Onet Online**, for more information about choosing a career
- <https://www.onetonline.org/>

# HCC Student Center

[www.hccs.edu](http://www.hccs.edu)

For International students (F 1 visa): Use your P number!

The image shows a screenshot of the HCC MyEagle website interface. At the top, there is a navigation bar with links for CALENDAR, LIBRARIES, CAREERS@HCC, CONTACT, and MYEAGLE STUDENT SIGN-INS. Below this is the HCC logo and the text "HOUSTON COMMUNITY COLLEGE". A red arrow labeled "1" points to the search icon in the navigation bar. The main content area is a grid of tiles: MyEagle Login, Student Sign-In, Calendar, Campus Map, Class Search, Course Catalog, Eagle Online, Email, Veterans Academy Information Session, hccs.edu, Learning Web, Library, My Grades, and My Financial Aid. A red arrow labeled "2" points to the MyEagle Login tile.

HCC E-mail, Canvas Online  
&  
Log in to HCC computers

Use Your Same Username and Password

# To-Do List & Advising Sessions

**Academics**

[Search](#)  
[Plan](#)  
[Enroll](#)  
[My Academics](#)

other academic... ▾ »

This Week's Schedule	
Class	Schedule
CSME 1452-4004 LL (36574)	MoTuWeThFr 3:10PM - 7:23PM Northline Campus Rm 323
CSME 1491-5005 LL (36579)	MoTuWeThFr 7:25PM - 9:57PM Northline Campus Rm 323
LEAD 1200-0003 LEC (31723)	TuTh 8:00AM - 8:58AM Pinemont Center Rm 140

[enrollment shopping cart ▶](#)

**SEARCH FOR CLASSES**

**Holds**

First Time In College  
[details ▶](#)

**To Do List**

- CMMTG2 Case Management Meeting 2
- CMLASS Complete the LASSI
- FHSTRA NO Hs Diploma/GED  
[details ▶](#)

**Continuing Education (Non Academic Credit)**

View your “To-Do List” and click on **more** for instructions

# HCC Learning Web



**HCC MyEagle**

 MyEagle Login	 Student Sign-In	 Calendar	 Campus Map	 Class Search
 Course Catalog	 Eagle Online	 Email	<b>Veterans Academy Information Session</b> Learning Hub Building, Room 201 Wednesday, September 6, 2017, 10 – 11am Learn about the  Events	
 hccs.edu	 Learning Web	 Library	 My Grades	 My Financial Aid



Find me at: <http://learning.hccs.edu/>

HOUSTON COMMUNITY COLLEGE EAGLE ONLINE EDUTUBE LIBRARIES TUTORING Log in Support Search

**HCC LearningWeb**

Faculty Programs Resources

Find a faculty member Search

[or browse the directory](#)

**Type your  
Advisor's name  
here**

HOUSTON COMMUNITY COLLEGE EAGLE ONLINE EDUTUBE LIBRARIES TUTORING Log in Support Search

**HCC LearningWeb**

Faculty Programs Resources

Home > Faculty > Nima Salehi

## Resources

- Step 1 - Advising Session 1
- Step 2 - Begin Academic Planner
- Step 3 - Advising Session 2
- Step 4 - Register for classes

# iAAR (Degree Plan)

## iAAR (Interactive Academic Advising Report)

- View interactive degree plan
- View what courses are needed, and which have been completed
- View course options

### HCC Student Center page

**Academics**

- (iAAR) Academic Requirements
- Course History
- Grades
- Test Scores
- Transfer Credit: Report
- View Final Exam Schedule
- other academic...

collapse all expand all view report as pdf

Taken In Progress Planned

**ADVISING DISCLAIMER**

**ASSOCIATE IN SCIENCE DEGREE PLAN REQUIREMENTS**

**Not Satisfied:** Catalog Year: Fall 2016 - Summer 2017  
I. ACADEMIC CORE CURRICULUM REQUIREMENTS.

- GPA: 1.000 required, 3.556 actual

**Written Communication Requirements**

**Not Satisfied:** A. Written Communication course requirements.

**Written Communication Requirements**

**Not Satisfied:** 1. Students are required to take 6 hours English Composition courses.

- Units: 6.00 required, 0.00 taken, 6.00 needed
- GPA: 1.000 required, 0.000 actual

# Academic Planner

## Academic Planner

- Plan courses needed for degree completion within your individual iAAR
- Organize courses by semester and planned enrollment
- Create a personal roadmap for degree completion

Sample Advisor

Advisor Center Search

my advisees student center general info transfer credit academics

Advisee Planner

Sample Student Notify Student

▼ Fall 2017 Enroll

Course	Description	Prereq	Units	Req	Electives	Status
ASTR 1303	<a href="#">Stars and Galaxies</a>	yes	3.00			
BCIS 1305	<a href="#">Business Computer Applications</a>		3.00	i		
EDUC 1300	<a href="#">Learning Framework (Emphasis on STEM Fields)</a>	yes	3.00	i		
ENGL 1301	<a href="#">Composition I</a>	yes	3.00	i		
HIST 1301	<a href="#">U.S. History to 1877</a>	yes	3.00	i		
MATH 1324	<a href="#">Math for Business</a>	yes	3.00	i		

▼ Spring 2018 Enroll

Course	Description	Prereq	Units	Req	Electives	Status
ACCT 2301	<a href="#">Prin of Financial Accounting</a>		3.00	i	★	
ARTS 1301	<a href="#">Art Appreciation</a>	yes	3.00	i		
COSC 2436	<a href="#">Programming Fundamentals III (Using C++)</a>	yes	4.00	i		
PSYC 2301	<a href="#">Introduction to Psychology</a>	yes	3.00	i		

Advisor Center Search

My Advisees Student Center General Info Transfer Credit Academics

Cancel



**F Y I** 

---

**STUDENTS WHO DO NOT COMPLETE THESE  
REQUIREMENTS WILL GET A**



**AND  
WILL HAVE A % OF YOUR FINAL GRADE  
DEDUCTED IN  
YOUR STUDENT SUCCESS COURSE !**