

VALUE

Value is the relative degree of lightness or darkness. We see images as light against dark, or dark against light. The greater the **contrast** (*difference in value*), the easier it is to see the image. Contrast allows you to sense depth and dimensionality (*space*), and can guide the eye through a composition through patterns of light and dark.

The scale below shows ten steps from white to black. These are **achromatic values** (dealing only with light and dark, not color).

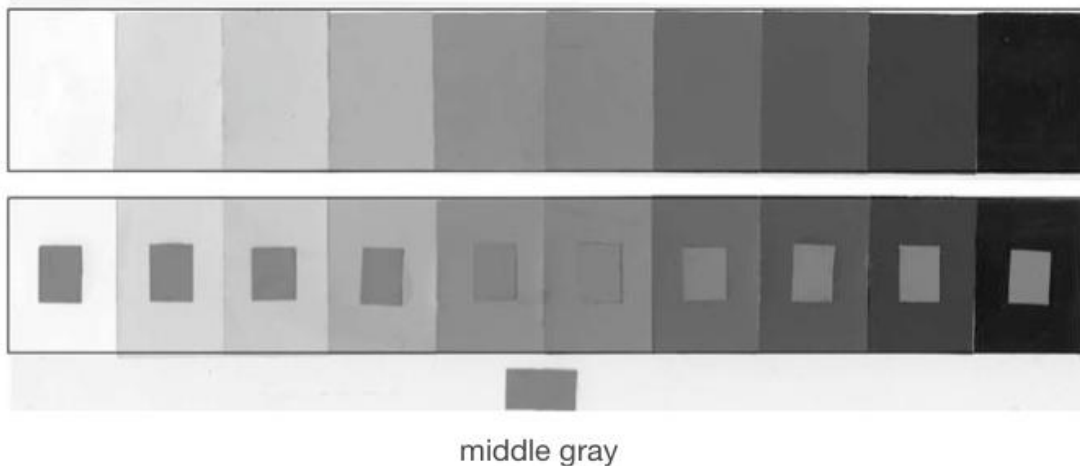
The Value Scale

A simple drawing tool that helps you see and draw values by comparison.

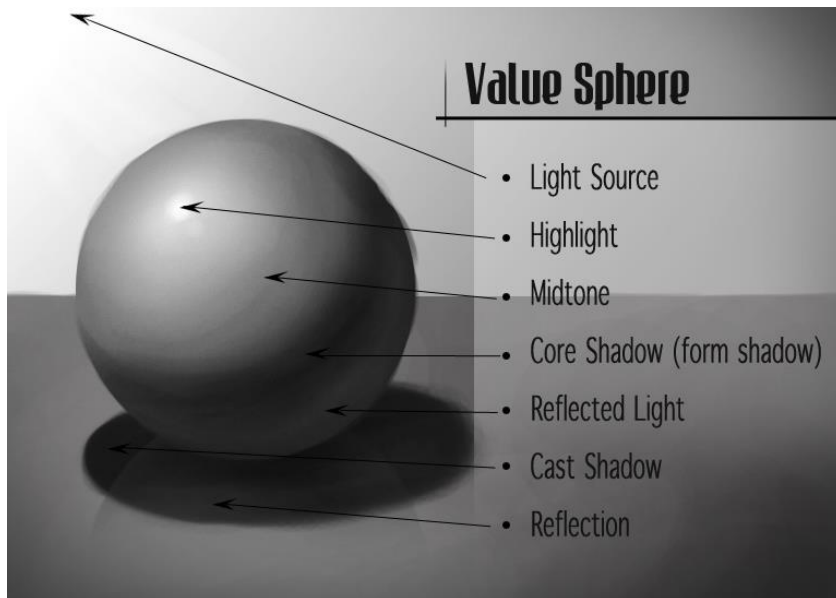
It ranges from white to black, with the center value being called “middle gray.”

High Key = White to Middle Gray

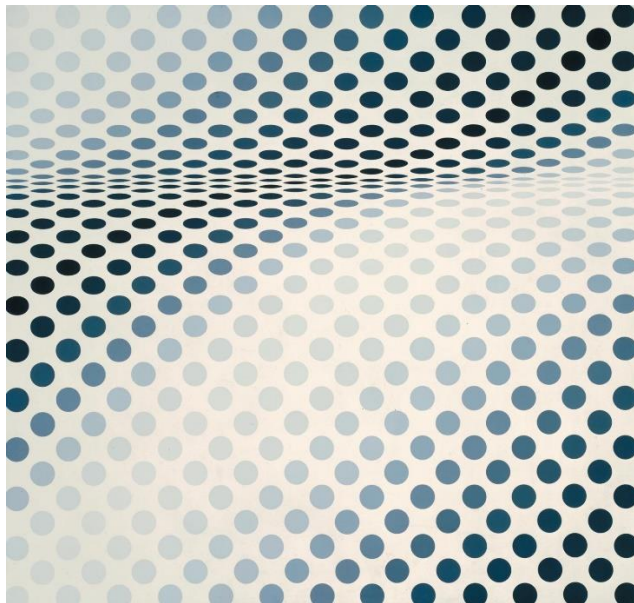
Low Key = Black to Middle Gray



Color also has value, known as **chromatic value**. Generally, a standard yellow has a greater lightness than a standard violet. A value finder (made by punching a circle on each step of the value scale) can be used to find chromatic value.



Representational art relies on value to create the illusion of three dimensionality. This image shows the range of value cast by a light source.



In abstract and nonrepresentational (nonobjective) art, value can also be used to create a sense of space, such as in this work by Bridget Riley (left). Contrast creates value patterns, such as in the work of Jisik Shin (right).